



**AMB PROPERTY CORPORATION**  
Local partner to global trade.™

# FOR LEASE



**9,618 SF Available**

**Des Moines Logistics Center - Building C  
SeaTac, WA**

**19240 Des Moines Memorial Way South, Building C  
SeaTac, WA**

Suite 100

Size 9,618 SF  
Office 238 SF  
Warehouse 9,380 SF

Clear Height 28'

Loading 6 DH

Features Cross Dock Facility  
Mezzanine Offices Available

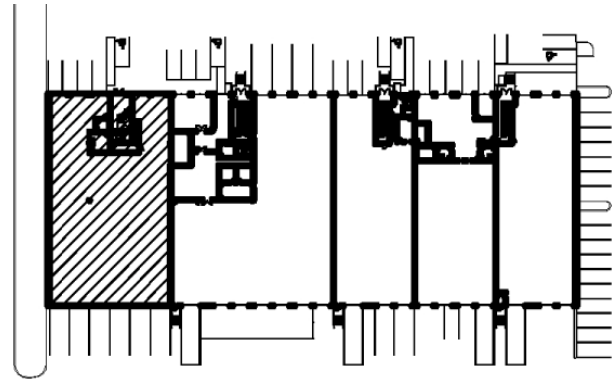
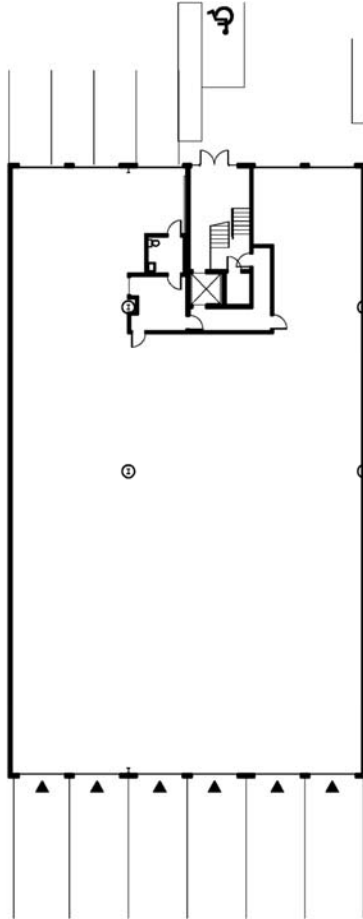
Location Great Airport Location  
Convenient Freeway Access





**AMB PROPERTY CORPORATION**  
Local partner to global trade.™

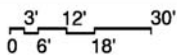
# FOR LEASE



**KEY PLAN**  
NOT TO SCALE



**AVAILABLE OFFICE**



OFFICE: 238 SF  
WAREHOUSE: 9,380 SF  
TOTAL AREA : 9,618 SF

For additional information, please contact:

Arie Salomon, SIOR, CCIM  
NAI Puget Sound Properties  
Principal  
Direct 425 586 5636  
Fax 425 455 9138  
Email [asalomon@nai-psp.com](mailto:asalomon@nai-psp.com)

Jeff Forsberg, CCIM  
NAI Puget Sound Properties  
Principal  
Direct 425 586 5610  
Fax 425 455 9138  
Email [jforsberg@nai-psp.com](mailto:jforsberg@nai-psp.com)

Billy Moultrie  
NAI Puget Sound Properties  
Principal  
Direct 425 586 5612  
Fax 425 455 9138  
Email [bmoultrie@nai-psp.com](mailto:bmoultrie@nai-psp.com)



Commercial Real Estate Services, Worldwide.

NO WARRANTIES OR REPRESENTATIONS, EXPRESSED OR IMPLIED, ARE MADE AS TO THE ACCURACY OR COMPLETENESS OF THE INFORMATION CONTAINED HEREIN AND SAME IS SUBMITTED SUBJECT TO ERRORS, OMISSIONS, RENTAL OR OTHER CONDITIONS, WITHDRAWAL WITHOUT NOTICE, AND TO ANY SPECIAL LISTING CONDITIONS IMPOSED BY OUR PRINCIPALS. ALL SIZES ARE APPROXIMATE. AMB MAKES NO COMMITMENT TO UPDATE THE INFORMATION CONTAINED HEREIN, AND MAY MAKE CHANGES TO THESE MATERIALS AT ANY TIME WITHOUT NOTICE. IN NO EVENT SHALL AMB OR ITS AFFILIATES BE LIABLE FOR ANY DAMAGES WHATSOEVER (INCLUDING, WITHOUT LIMITATION, DAMAGES FOR LOSS OF PROFITS, BUSINESS INTERRUPTION, OR LOSS OF OPPORTUNITY) ARISING OUT OF THE USE OF THE INFORMATION CONTAINED HEREIN.