



**AMB PROPERTY CORPORATION**  
Local partner to global trade.™

# FOR LEASE



**6,777 SF Available**

**Des Moines Logistics Center - Building C  
SeaTac, WA**

**19240 Des Moines Memorial Way South, Building C  
SeaTac, WA**

Suite 550

Size 6,777 SF  
Office 2,140 SF  
Warehouse 4,637 SF

Clear Height 28'

Loading 3 DH & 1 GL (Oversized)

Available May 1, 2010

Features Cross Dock Facility  
Mezzanine Offices Available

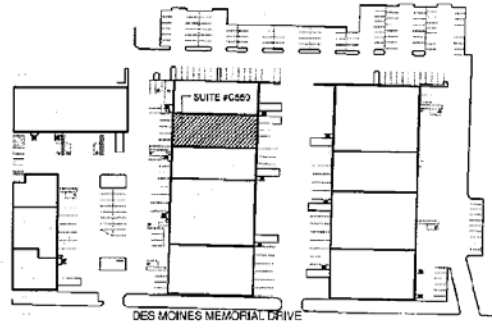
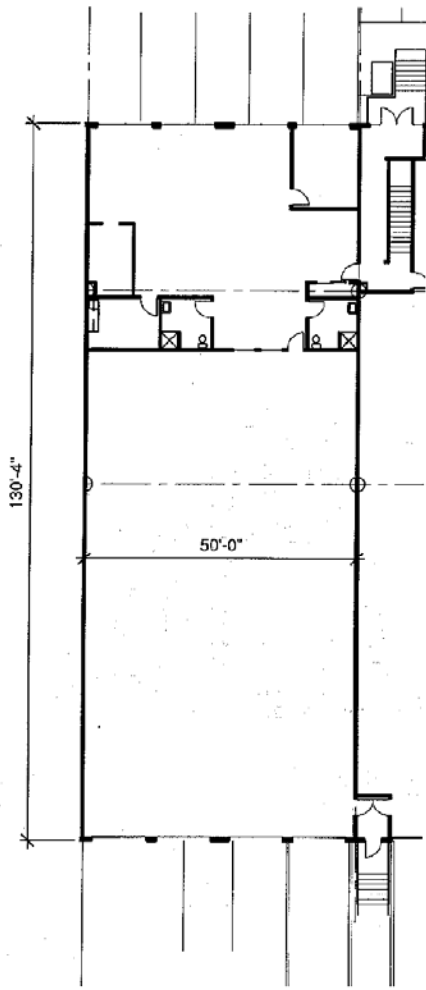
Location Great Airport Location  
Convenient Freeway Access





**AMB PROPERTY CORPORATION**  
Local partner to global trade.™

# FOR LEASE



**KEY PLAN**  
NOT TO SCALE

**AVAILABLE SUITE**  
TOTAL AREA : 6,777 SF

**LEGEND**  
● ON GRADE DOOR  
▲ DOCK LEVEL DOOR

For additional information, please contact:

Arie Salomon, SIOR, CCIM  
NAI Puget Sound Properties  
Principal  
Direct 425 586 5636  
Fax 425 455 9138  
Email [asalomon@nai-psp.com](mailto:asalomon@nai-psp.com)

Jeff Forsberg, CCIM  
NAI Puget Sound Properties  
Principal  
Direct 425 586 5610  
Fax 425 455 9138  
Email [jforsberg@nai-psp.com](mailto:jforsberg@nai-psp.com)

Billy Moultrie  
NAI Puget Sound Properties  
Principal  
Direct 425 586 5612  
Fax 425 455 9138  
Email [bmoultrie@nai-psp.com](mailto:bmoultrie@nai-psp.com)



Commercial Real Estate Services, Worldwide.

NO WARRANTIES OR REPRESENTATIONS, EXPRESSED OR IMPLIED, ARE MADE AS TO THE ACCURACY OR COMPLETENESS OF THE INFORMATION CONTAINED HEREIN AND SAME IS SUBMITTED SUBJECT TO ERRORS, OMISSIONS, RENTAL OR OTHER CONDITIONS, WITHDRAWAL WITHOUT NOTICE, AND TO ANY SPECIAL LISTING CONDITIONS IMPOSED BY OUR PRINCIPALS. ALL SIZES ARE APPROXIMATE. AMB MAKES NO COMMITMENT TO UPDATE THE INFORMATION CONTAINED HEREIN, AND MAY MAKE CHANGES TO THESE MATERIALS AT ANY TIME WITHOUT NOTICE. IN NO EVENT SHALL AMB OR ITS AFFILIATES BE LIABLE FOR ANY DAMAGES WHATSOEVER (INCLUDING, WITHOUT LIMITATION, DAMAGES FOR LOSS OF PROFITS, BUSINESS INTERRUPTION, OR LOSS OF OPPORTUNITY) ARISING OUT OF THE USE OF THE INFORMATION CONTAINED HEREIN.