



AMB PROPERTY CORPORATION
Local partner to global trade.™

FOR LEASE



14,184 SF Available | Seattle Logistics 1 - Building B SeaTac, WA

855 South 192nd Street
Building B, Suite 900
SeaTac, WA

<u>Building B</u>	
Suite 900	14,184 SF (5,736 SF of Office) (Landlord will consider discounting the mezzanine office)
Loading	4 DH & 2 GL
Clear Height	24'
Location	Located Within 5 Minutes of Cargo Entrance to Sea-Tac Intl. Airport
Features	Spacious Locations Overlooking Mt. Rainier & Airport Runways. Concrete Apron, Dock Canopy, Dock Levelers and Excellent Truck Maneuvering.

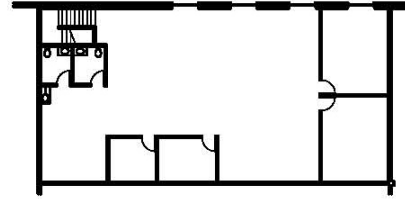
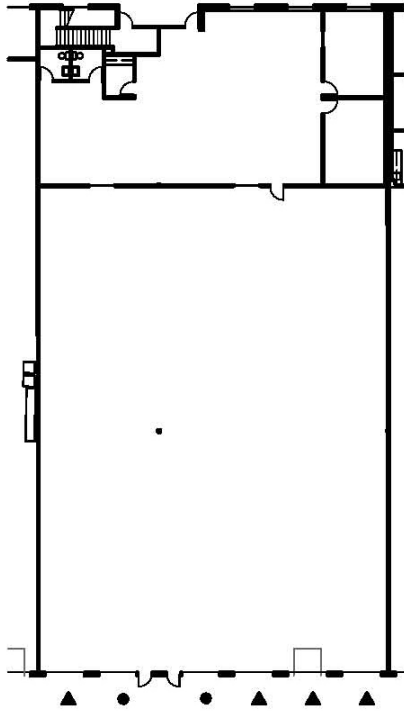


Location Map



AMB PROPERTY CORPORATION
Local partner to global trade.™

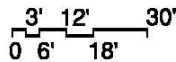
FOR LEASE



MEZZANINE LEVEL



AVAILABLE OFFICE



OFFICE : 2,833 SF
MEZZANINE: 2,903 SF
WAREHOUSE: 8,448 SF
TOTAL AREA : 14,184 SF

LEGEND

- ON GRADE DOOR
- ▲ DOCK LEVEL DOOR

For additional information, please contact:

Arie Salomon, SIOR, CCIM
 NAI Puget Sound Properties
 Principal
 Direct 425 586 5636
 Fax 425 455 9138
 Email asalomon@nai-pp.com

Jeff Forsberg, CCIM
 NAI Puget Sound Properties
 Principal
 Direct 425 586 5610
 Fax 425 455 9138
 Email jforsberg@nai-pp.com

Billy Moultrie
 NAI Puget Sound Properties
 Principal
 Direct 425 586 5612
 Fax 425 455 9138
 Email bmoultrie@nai-pp.com



Commercial Real Estate Services, Worldwide.

NO WARRANTIES OR REPRESENTATIONS, EXPRESSED OR IMPLIED, ARE MADE AS TO THE ACCURACY OR COMPLETENESS OF THE INFORMATION CONTAINED HEREIN AND SAME IS SUBMITTED SUBJECT TO ERRORS, OMISSIONS, RENTAL OR OTHER CONDITIONS, WITHDRAWAL WITHOUT NOTICE, AND TO ANY SPECIAL LISTING CONDITIONS IMPOSED BY OUR PRINCIPALS. ALL SIZES ARE APPROXIMATE. AMB MAKES NO COMMITMENT TO UPDATE THE INFORMATION CONTAINED HEREIN, AND MAY MAKE CHANGES TO THESE MATERIALS AT ANY TIME WITHOUT NOTICE. IN NO EVENT SHALL AMB OR ITS AFFILIATES BE LIABLE FOR ANY DAMAGES WHATSOEVER (INCLUDING, WITHOUT LIMITATION, DAMAGES FOR LOSS OF PROFITS, BUSINESS INTERRUPTION, OR LOSS OF OPPORTUNITY) ARISING OUT OF THE USE OF THE INFORMATION CONTAINED HEREIN.