



AMB PROPERTY CORPORATION
Local partner to global trade.™

FOR LEASE



16,663 SF Available | Seattle Logistics 2 - Building E SeaTac, WA

**18900 - 8th Avenue South
Building E, Suite 300
SeaTac, WA**

Building E
Suite 300

16,663 SF (2,440 SF of Office)
(4,788 SF of additional contiguous office
also available)

Loading

8 DH & 3 GL

Location

Located Within 5 Minutes of Cargo
Entrance to Sea-Tac International
Airport.

Features

Spacious Locations Overlooking Mt.
Rainier & Airport Runways. Concrete
Apron, Dock Canopy, Dock Levelers
and Excellent Truck Maneuvering.

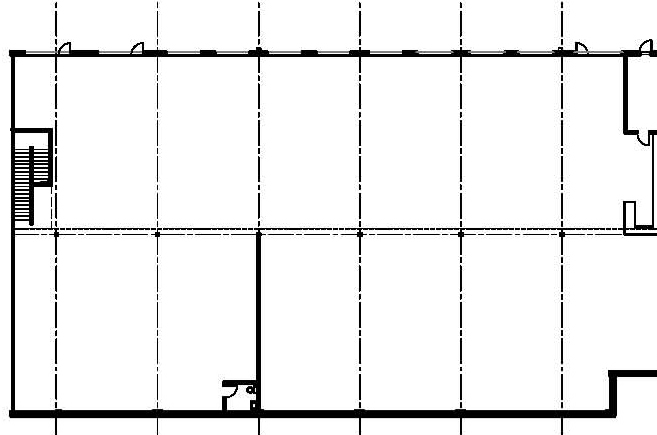
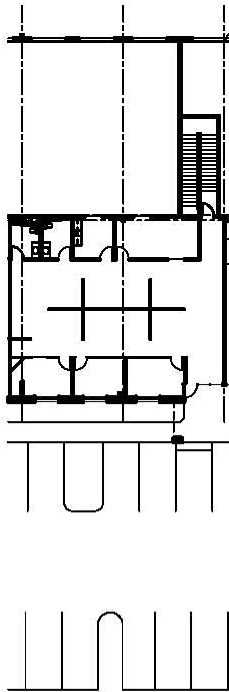


Location Map



AMB PROPERTY CORPORATION
Local partner to global trade.™

FOR LEASE



AVAILABLE FOR LEASE



SUITE 300

2,440 sf OFFICE
14,223sf WHSE
16,663 sf TOTAL

For additional information, please contact:

Arie Salomon, SIOR, CCIM
NAI Puget Sound Properties
Principal
Direct 425 586 5636
Fax 425 455 9138
Email asalomon@nai-psp.com

Jeff Forsberg, CCIM
NAI Puget Sound Properties
Principal
Direct 425 586 5610
Fax 425 455 9138
Email jforsberg@nai-psp.com

Billy Moultrie
NAI Puget Sound Properties
Principal
Direct 425 586 5612
Fax 425 455 9138
Email bmoultrie@nai-psp.com



Commercial Real Estate Services, Worldwide.

NO WARRANTIES OR REPRESENTATIONS, EXPRESSED OR IMPLIED, ARE MADE AS TO THE ACCURACY OR COMPLETENESS OF THE INFORMATION CONTAINED HEREIN AND SAME IS SUBMITTED SUBJECT TO ERRORS, OMISSIONS, RENTAL OR OTHER CONDITIONS, WITHDRAWAL WITHOUT NOTICE, AND TO ANY SPECIAL LISTING CONDITIONS IMPOSED BY OUR PRINCIPALS. ALL SIZES ARE APPROXIMATE. AMB MAKES NO COMMITMENT TO UPDATE THE INFORMATION CONTAINED HEREIN, AND MAY MAKE CHANGES TO THESE MATERIALS AT ANY TIME WITHOUT NOTICE. IN NO EVENT SHALL AMB OR ITS AFFILIATES BE LIABLE FOR ANY DAMAGES WHATSOEVER (INCLUDING, WITHOUT LIMITATION, DAMAGES FOR LOSS OF PROFITS, BUSINESS INTERRUPTION, OR LOSS OF OPPORTUNITY) ARISING OUT OF THE USE OF THE INFORMATION CONTAINED HEREIN.